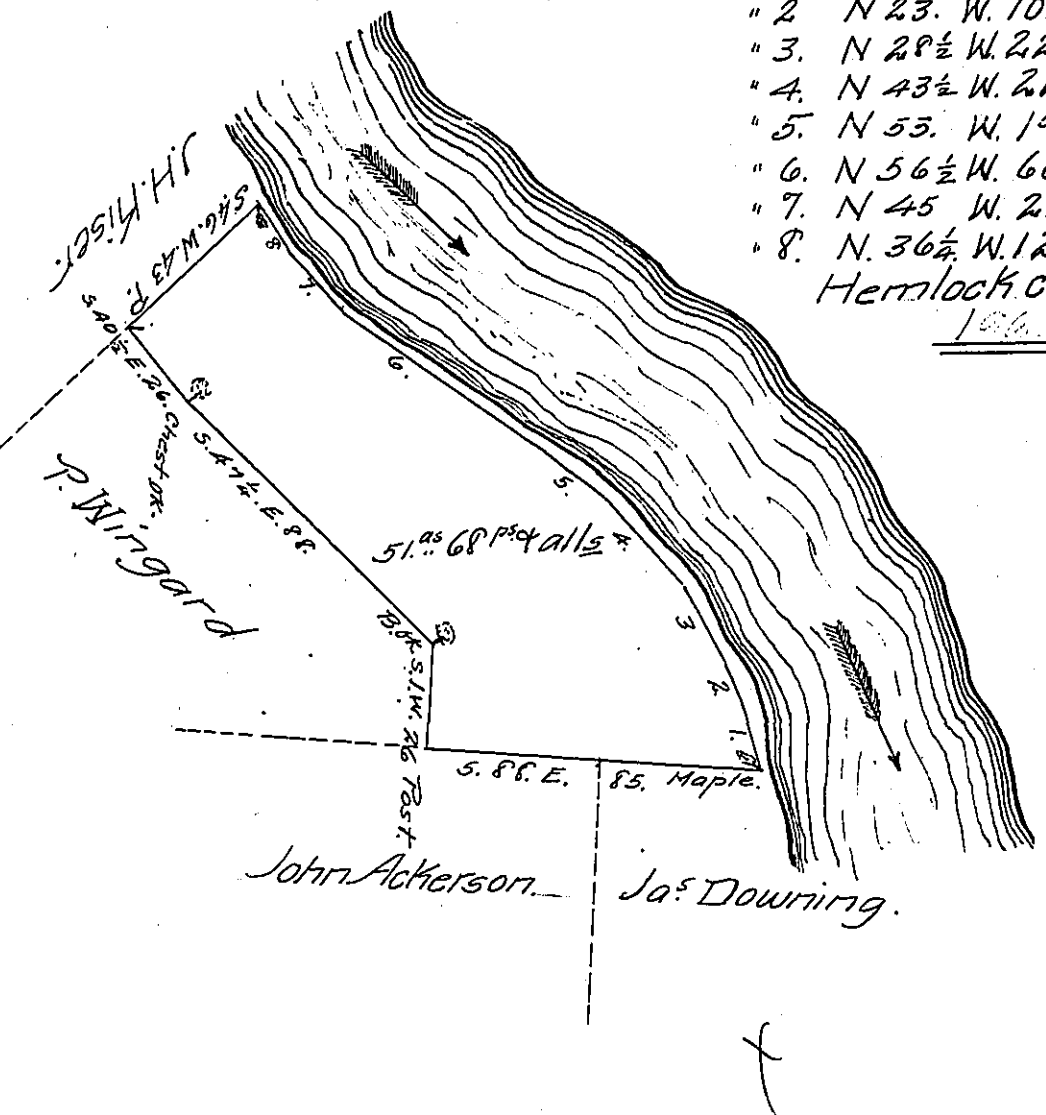


FORM No. 1.

Courses & Distances, up the River from Maple V3

- No 1. N. 20. W. 18.
- " 2. N 23. W. 10.
- " 3. N 28 1/2 W. 22.
- " 4. N 43 1/2 W. 28. Rock.
- " 5. N 53. W. 19.
- " 6. N 56 1/2 W. 66.
- " 7. N 45 W. 21
- " 8. N. 36 1/2 W. 12. to Hemlock cor.



Draft of a tract of land situate in Cornplanter Township, Venango County, West of and adjoining the Allegheny River.

Surveyed November 22^d 1859 for Arville Tolls on Settlement and improvement of John Noacre.

W^m Hilands O.S.

Hon W^m H. Keim
Surveyor General.

IN TESTIMONY that the above is a copy of the original remaining on file in the Department of Internal Affairs of Pennsylvania, made conformably to an Act of Assembly approved the 16th day of February 1833, I have hereunto set my hand and caused the Seal of said Department to be affixed at Harrisburg, this fifth day of April 1907

Isaac R. Brown
Secretary of Internal Affairs.